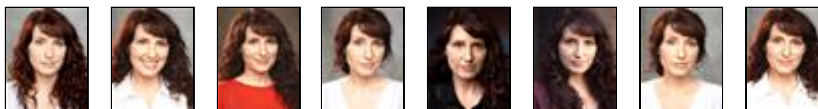




Photo: Tom Barker

# MELISSA WILLIAMS



## CIRCUIT PERSONAL MANAGEMENT

Suite 31, Progress Centre, Ardwick Green, Manchester, M12 6HS

Phone: 0161-425 0763

E-mail: [mail@circuitpm.co.uk](mailto:mail@circuitpm.co.uk)

WWW: [www.circuitpm.co.uk](http://www.circuitpm.co.uk)

<b>Location:</b>	Greater Manchester, England, United Kingdom Greater London, England, United Kingdom Los Angeles County, California, United States	<b>Playing Age:</b>	33 - 43 years
<b>Height:</b>	5'5" (165cm)	<b>Appearance:</b>	Eastern European, White
		<b>Other:</b>	Equity, SAG/AFTRA, NZ Actors Equity
		<b>Eye Colour:</b>	Brown
		<b>Hair Colour:</b>	Dark Brown
		<b>Hair Length:</b>	Long

## Credits:

### Film

2019, Film, Mary, CIRCULUM, Avgerinos Karadimas  
 2019, Film, Rachel, FORCE OF HABIT, Karen Henthorn  
 2019, Film, Grace, STOCKHOLM, Emma Pinkney  
 2017, Film, Aunt Gail, PROJECT J, Angle3 Pictures, Léah McVeagh  
 2016, Film, Mother, SAFE ZONE, Angle3 Pictures, Daryl Wong  
 Film, Kelly, INSPIRED FILM FUND, Creation Films, Jonathan Warner  
 Film, Roan, COMEUPPANCE, Enchanted Films, Valerie Plimpton  
 Film, Pamela Price, THE PASSION OF THE PEN, Gary Ammirati

### Stage

2019, Stage, Margery, VINEGAR TOM, ICAT, George Want  
 2018, Stage, Ashputtel, Little Red Cap, et al, GRIMM TALES, ICAT, Megan Griffiths  
 2018, Stage, Richard III / Anne, RICHARD III, ICAT, Adjoa Andoh, Simon Trinder  
 2017, Stage, Mitzi \*Winner Best Supporting Actress, A MURDER IS ANNOUNCED, Shoreside Theatre Company, Carol Dumbleton  
 2017, Stage, Sybil \*Nominated Best Supporting Actress, PRIVATE LIVES, Torbay Theatre Company, Anne Rimmer  
 2017, Stage, Maria, LOVE'S LABOUR'S LOST, Shoreside Theatre Company, Carol Dumbleton  
 2016, Stage, Goneril, KING LEAR, Shoreside Theatre Company, Craig Julich-Serventy  
 2015, Stage, Carla/Caroline Crale, GO BACK FOR MURDER, Shoreside Theatre Company, Carol Dumbleton  
 2014, Stage, Sam, THE BLOOD KEY, Horizon Productions, Léah McVeagh  
 2011, Stage, Joyce, TRIVIAL PURSUITS, Harlequin Musical Theatre Company, Sue Rossiter  
 2008, Stage, Ariel, THE TEMPEST, New Stagers, Sharon Stubbs  
 2007, Stage, Elizabeth Proctor \*Nom Best Actor + Best Newcomer, THE CRUCIBLE, New Stagers, Sharon Stubbs

### Voice Over

Voice Over, Various Americans, ASH VS THE EVIL DEAD, STARZ Evil Dead NZ, Ltd, Chris Stewart

### Musical

Musical, Mrs. Crachit, A CHRISTMAS CAROL, Harlequin Musical Theatre Company, Sue Rossiter

### Further Credits

2019, Rehearsed Reading, Clarissa, CLUBBING, Everyman New Writers Showcase, Liverpool, Allyander Southwell  
 Improvisation, Improv Actor, SLOW...CHILDREN AT PLAY - 5 YEARS AT CONTINUOUS LA VENUES, Tim Simek

**Skills:**

**Accents & Dialects:** American-California, American-New York, American-Standard\*, American-West Coast, American-Western States, Australian, Canadian, French, Irish RP, RP, Russian  
(\* = native)

**Music & Dance:** A Cappella, Alto, Ballad, Ceroc Dance, Charleston, Choral Singing, Country Dancing, Country Singing, Disco Dancing, Folk Singing, Freestyle Dance, Gospel Singing, Harmony Singing, Jazz Singing, Jitterbug, Lindy Hop, Line Dancing, Mezzo, Period Dancing  
(\* = highly skilled)

**Performance:** Actor-Singer, BGSC Level 1 Standard, Comedy Improv

**Vehicle Licences:** Car Driving Licence

**Other Skills:** Life Coach, Writer

**Training:**

Jenny Carson, Private Vocal Coaching

Intro to Meisner, Both Feet, Steph Morgan

Karen Henthorn, Private Screen Coaching

ICAT, Artist Development Course, Shakespeare Intensive

LAMDA, 1-year Post Grad Classical Acting

Cal State University Northridge, BA in Theatre, Film Production & Marketing

---

SPOTLIGHT • 7 Leicester Place, London WC2H 7RJ • Tel: 020 7437 7631 • [www.spotlight.com](http://www.spotlight.com)

Copyright © 2019 Spotlight. The information in this profile has been provided by or on behalf of the member concerned. Whilst every effort has been made to ensure that the information is correct Spotlight cannot accept responsibility for its accuracy.